

The Virgin's Lullaby

Words and Music by
JASON TODD DEERE
and VICTORIA SHAW
*Arranged and Orchestrated by
Bradley Knight*

39 Gently ♩ = 71

p

Shepherd SOLO
mp

I am a shep-herd, — hum - bled by heav - en's bright —

— star. I've noth-ing to of - fer — but the peace that I hold in — my —

Rehearsal time stamps are indicated before section changes throughout this piece.

10
8

— heart. The night I saw — the heav - ens o - pen, as

10 B \flat C F

13
8

an-gels filled the sky, — but noth-ing's ev - er touched

13 B \flat C Dm B \flat C

16
8

— my soul — like a vir-gin's lull - a - by. —

16 Dm B \flat C sus C

0:52 40 rit.

Flowing $\text{♩} = 62$
Mary SOLO
mp

19
12

Sleep — to - night; —

19 G G/B C

21

close _____ your eyes. _____

D $\frac{D7}{G}$ G Gsus

21

23

Oh, _____ Child _____ of mine, _____ You bring the _____ world

G $\frac{G}{B}$ C

23

25

love, _____ glo - ry _____ di - vine.

1:28 41 (♩.=♩)

King SOLO *mp*

We are the

D G $\frac{C}{E}$

25

28

8 kings, trav - eled so far from the east, bear - ing -

Two kings join for TRIO

8 trav - eled so far from the east,

F Fmaj7 A Bb

28

31

8 gifts to lay be - fore the Prince of

8 to lay be - fore the Prince of

Dm Fmaj7 C

31

33

8 Peace. We've seen the world and all its won - der, but

8 Peace. seen the world and all its won - der,

Bb C C7 F E A

33

36

here be - fore_ our eyes, — hum-bled by — the mir -

here be - fore_ our eyes, — hum-bled by — the mir -

36 B \flat C Dm B \flat C

39 2:15 42

- a - cle_ of a vir - gin's lull - a - by. — *rit.*

- a - cle_ of a vir - gin's lull - a - by. — *unis.*

39 Dm B \flat Csus C

42 *Mary SOLO*
mp

Sleep — to - night; — close — your

42 *LADIES*
p

Ooo, — close — your

42 G $\frac{G}{B}$ C D

45

eyes. _____ Oh, _____ Child _____ of

45

eyes. _____

45

D7 G G G B

47

mine, _____ You bring the _____ world love, _____ glo - ry _____ di -

47

You bring the _____ world love, _____ glo - ry _____ di -

47

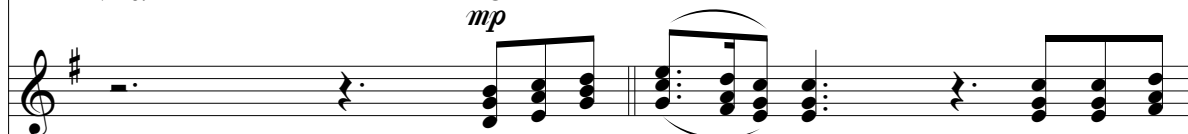
C D

49



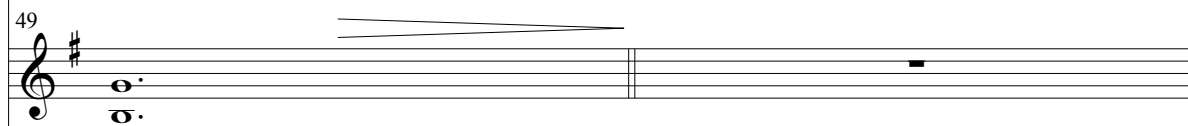
vine.

Angel TRIO

mp

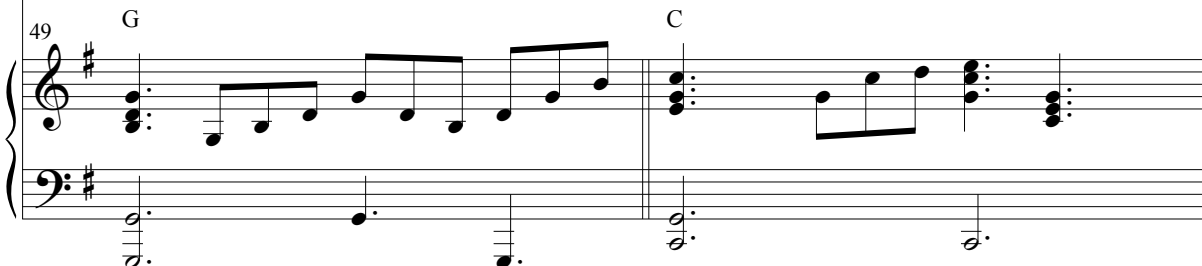
We are the an - gels sent from the

49

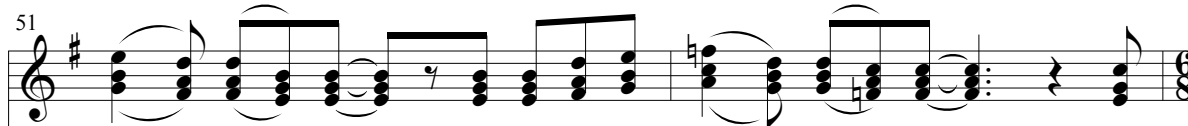


vine.

49

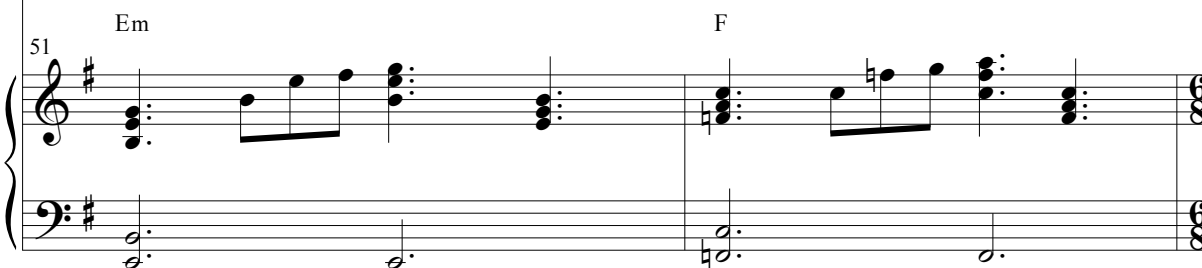


51



throne on _ high _ to join in this lull - a - by; _ His

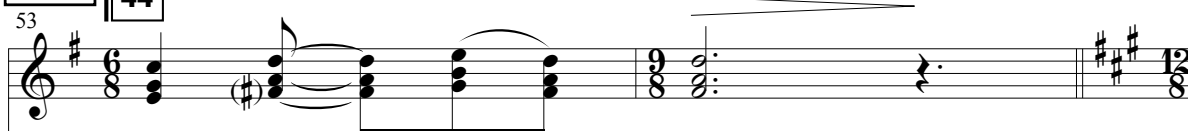
51



3:06

44

53



prais - es _ we _ sing.

Dsus

D

53



Mary SOLOIST and CHOIR

55 *mp*

Sleep _____ to - night; _____

A A C# D

55 *mf*

57

close _____ your eyes. _____

E E7 A A

57

59 *mf*

Oh, _____ Child _____ of mine, _____ You bring the _____ world

Oh, _____ Child of mine, _____ You bring the _____ world

A A C# D

59

61

love, — glo - ry — di - vine. —

love, — glo - ry — di - vine. —

E A D F# 2 E G# 2

63

Oh, — Child — of mine, — You bring the — world

Oh, — Child of mine, — You bring the — world

A A C# D

65

love, — glo - ry — di - vine. —

love, — glo - ry — di - vine. —

E F#m2 F#m A E

Mary SOLO
p

67

Let Your light shine, bring the world

67

Dmaj9

A
E

p

69 *rit.*

love, glo - ry di - vine.

69

E7sus E7 D

Slowly, deliberately

pp

rit.

71 *rit.*

71

Bm7

A

rit.